

**PALM
JEBEL ALI**

VILLA

**B L U E
H O R I Z O N**

THE BEACH COLLECTION

NAKHEEL

Index

1. A CURATED COLLECTION

THE
BEACH VILLAS

Serenity By The Sea

In a beach villa, a happy tomorrow arrives every day, every single dawn.

Beachfront living at its finest	—	P. 6
An iconic neighbourhood	—	P. 15
Introducing the Beach Collection	—	P. 20

2. LIVE IN THE MASTERPIECE

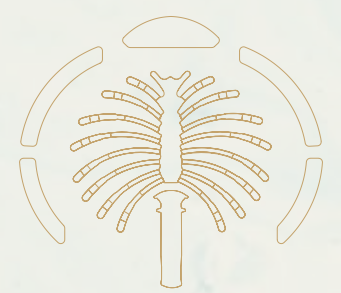
OWN A PIECE
OF HISTORY

The Beach Collection	—	P. 28
Villa Blue Horizon	—	P. 34

A CURATED COLLECTION

THE
BEACH
VILLAS

1



Serenity By The Sea

Beachfront living at its finest
An iconic neighbourhood
Introducing the Beach Collection

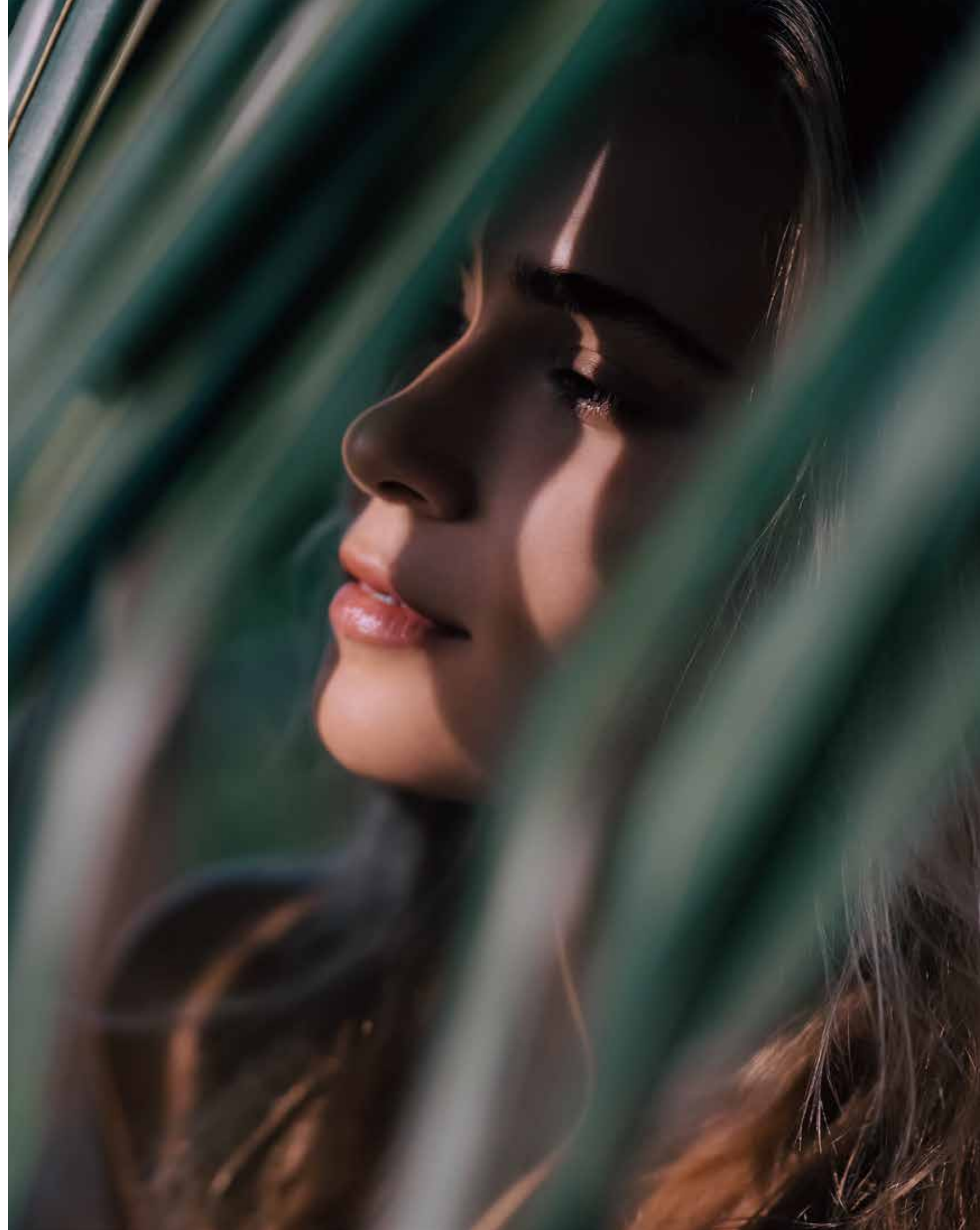
- P.6
- P.15
- P.20

— BEACHFRONT LIVING AT ITS FINEST

SUN, SEA, SAND, & SOPHISTICATION

EDEN HAS A NEW ADDRESS.

Welcome to Palm Jebel Ali, a world-class lifestyle destination meticulously designed and impeccably curated, providing unrivalled luxury living to its residents.

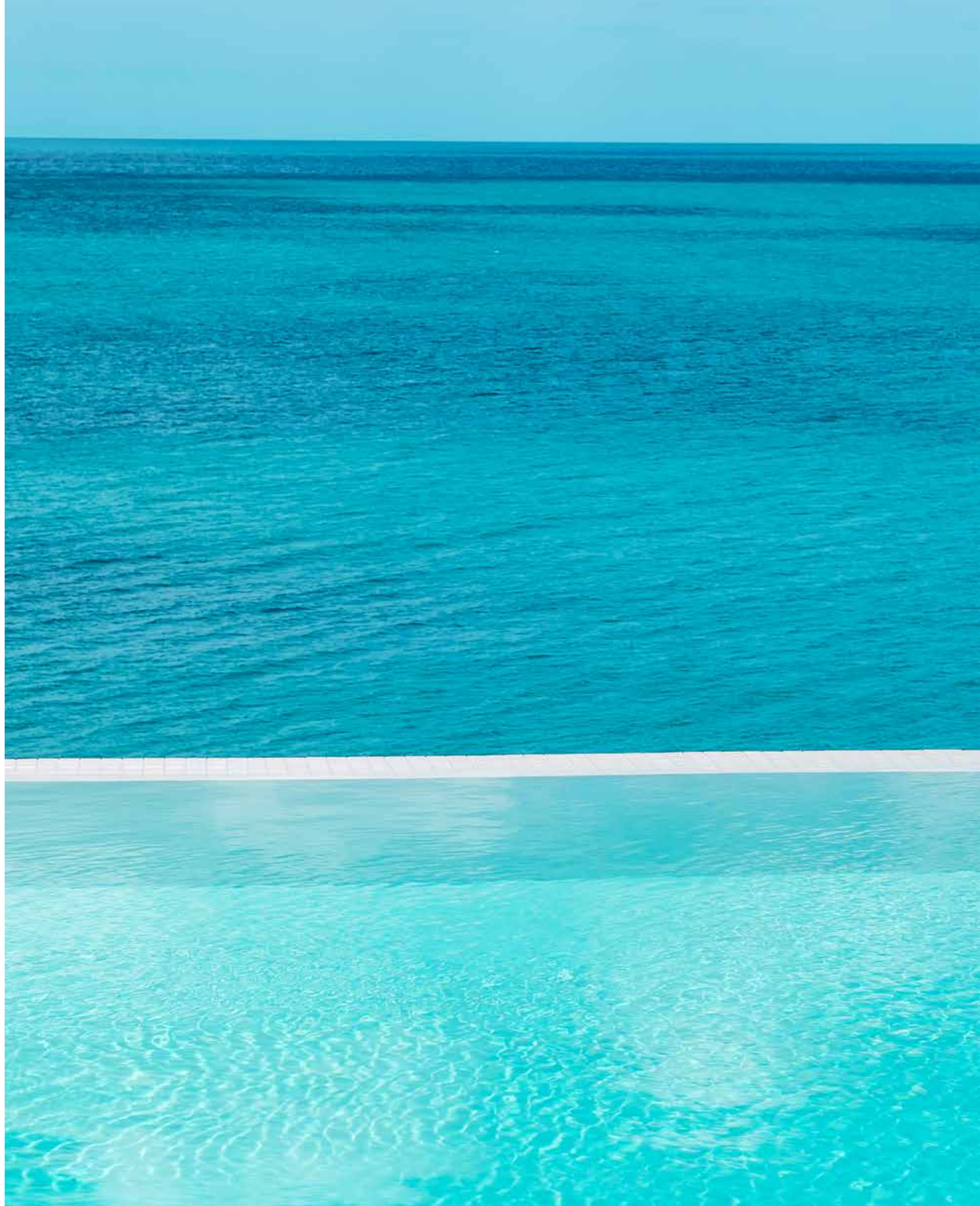


Live a life of **serenity and comfort** in Dubai's most coveted district, a true kaleidoscope born out of colourful greenery, azure waters, and pristine white sands.

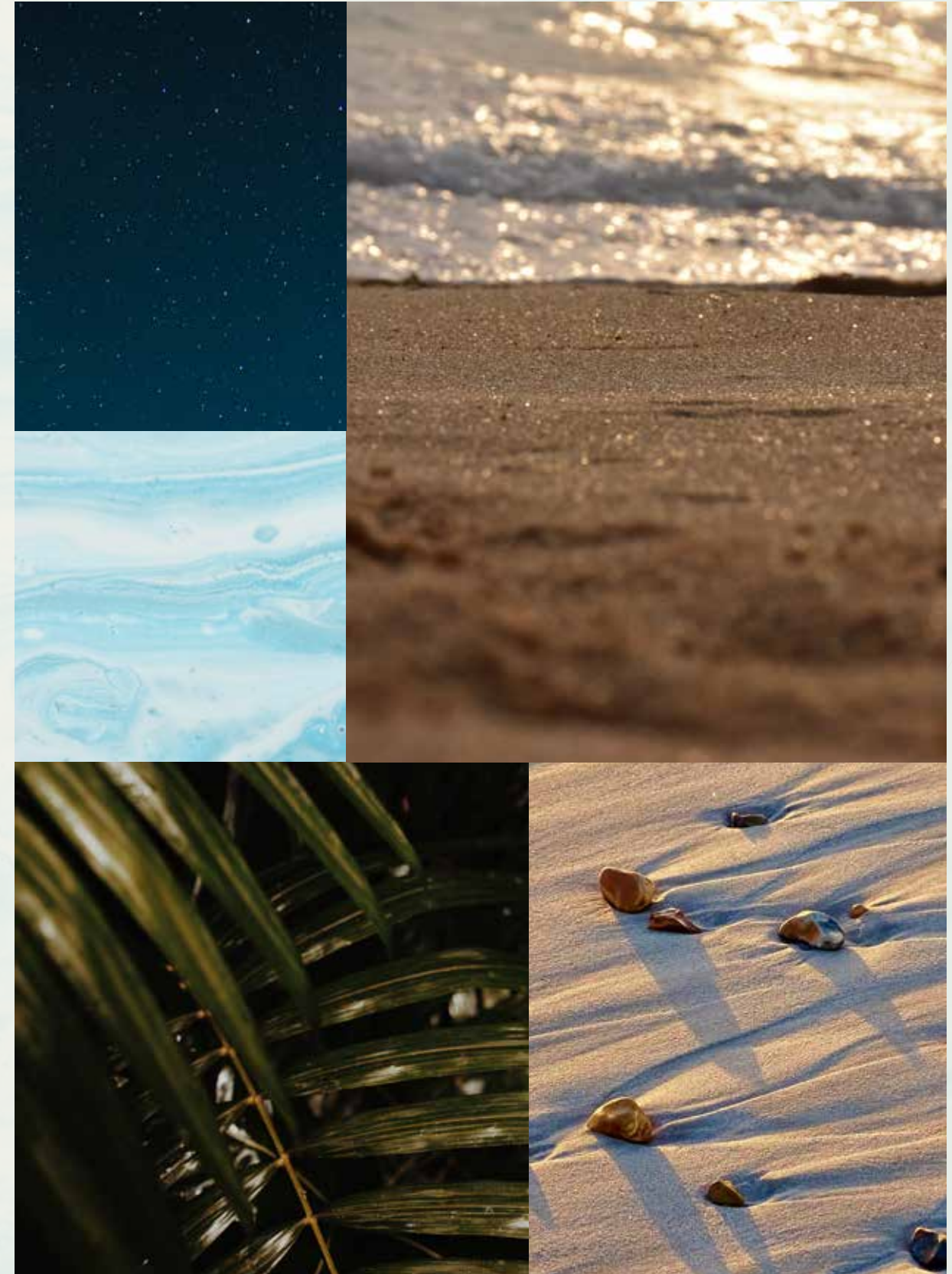
LIVE IN HARMONY WITH NATURE, BETWEEN THE CITY AND THE SKY.

Palm Jebel Ali rises from the sea to form a perfect paradisiacal archipelago. This masterpiece of luxury living offers a unique perspective on Dubai's skyline from a haven of tranquillity to boasting the longest coastline of any destination in Dubai. Palm Jebel Ali is located minutes away from the energy of the city, with excellent connectivity via Sheikh Zayed Road (E11) to other Dubai destinations or to Abu Dhabi. Palm Jebel Ali will be the feature destination of Dubai's rapidly developing southern urban centre. Spectacular properties and five-star amenities are skilfully woven together to create a highly desirable residential destination.





THE
FRONDS
BEACH COLLECTION





— FLOURISHING GREEN FRONDS

AN ICONIC NEIGHBOURHOOD

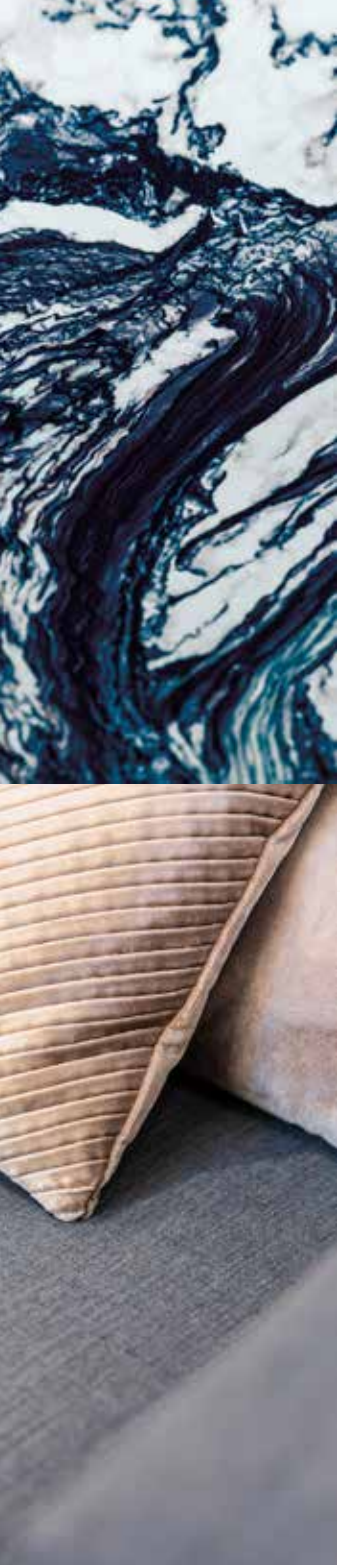
ARTFULLY DESIGNED, PRIVATE
NEIGHBOURHOODS FOR SOPHISTICATED
CITY LIVING.

Each exclusive frond forms its own thoughtfully planned private neighbourhood. Discover elegant streets painted in varying shades of green. Lush, layered flora merges with carefully curated foliage to create a perfectly harmonious residential landscape directly on the beachfront.

The frond community focuses on offering an active lifestyle, with wide walkable streets allowing pedestrians and bikers to access the beach through pocketed parks. The frond streetscape offers an intensely lush and fragrant landscape providing adequate shade coverage, with designated tree corridors alternating with street lighting and an additional layer of planting buffer to complete this idyllic verdant oasis.



Savour the refined, tropical atmosphere that surrounds you as you step out from your serene garden onto the sandy beach that lies at your doorstep. Enjoy the calming sounds of the waves and the openness of the sea for moments of pure relaxation.

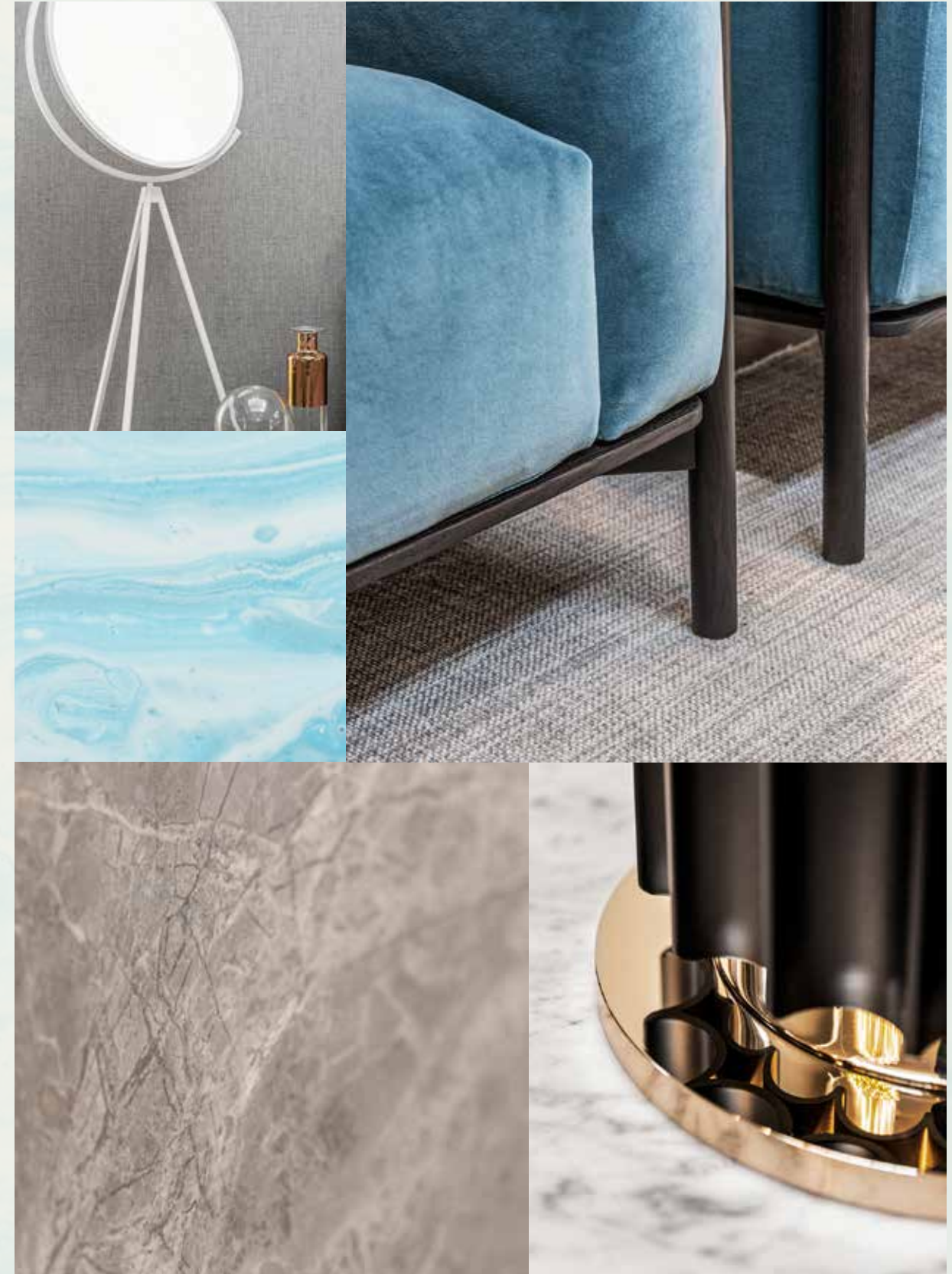


INTRODUCING THE BEACH COLLECTION

CRAFTED WITH CARE

SOPHISTICATED STYLE AND PERFECT POISE.
DISCOVER THE BLISSFUL [BEACH COLLECTION](#).

An inspired collection nestled in an idyllic setting.
Relax as you listen to the sounds of calming water
from the comfort of your enchanting beachfront
terrace.

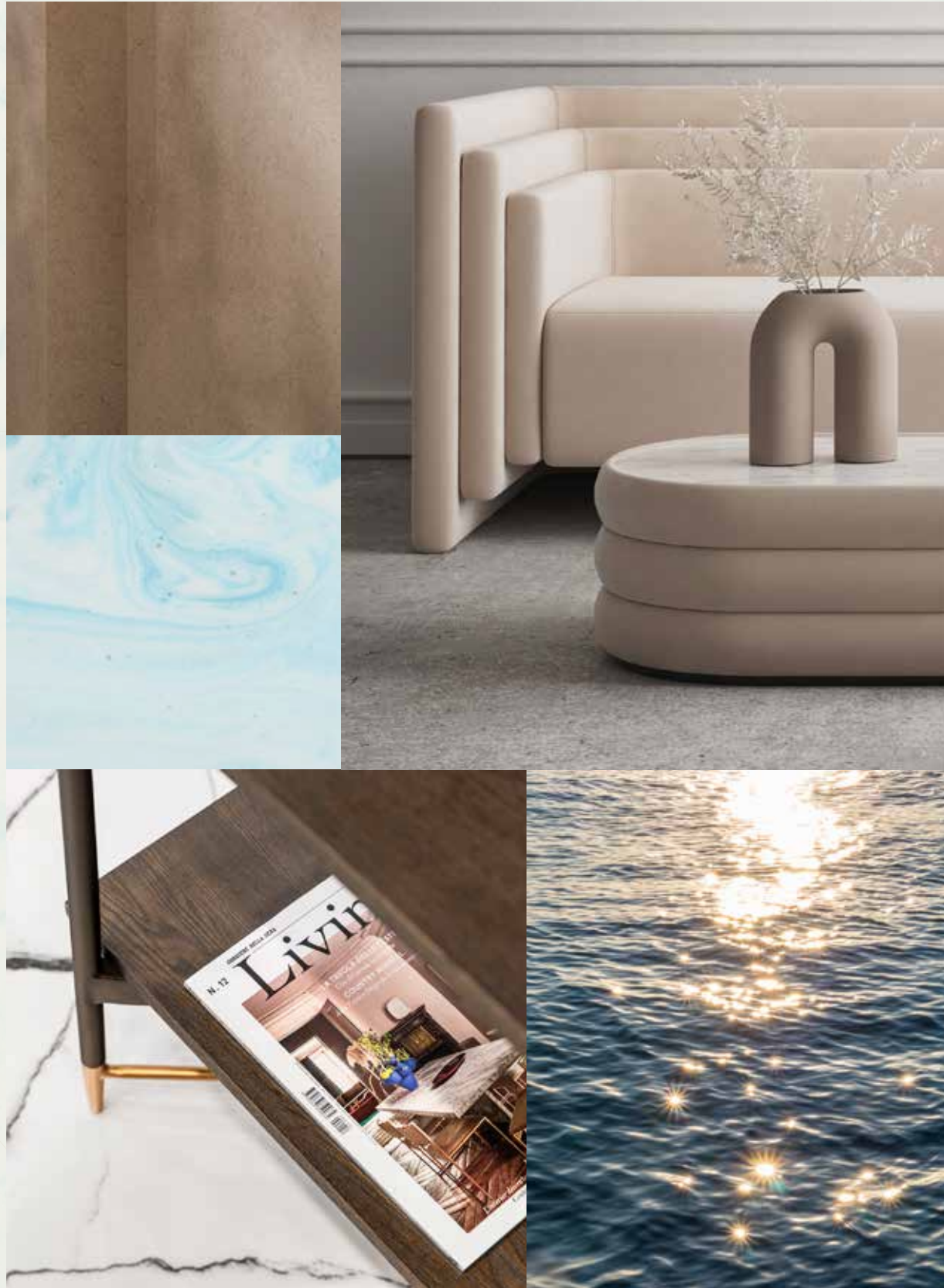


Exceptional design, a breathtaking beachfront location, and the tranquillity of an exclusive, private neighbourhood.

HOMES DESIGNED WITH **STYLISH FLAIR.**

The Beach Collection is for those who seek a home with a distinctly creative, contemporary design. Discover the wide range of unique architectural designs developed to accommodate a variety of lifestyles with thoughtful spacious layouts that ensure seamless indoor-outdoor living, designed to maximise views of the sea and integrate a feeling of outdoor and indoor harmony. Contemporary architecture achieves a timeless appeal. Villa finishes are unique to each villa, complementing its design and enhancing its key features.



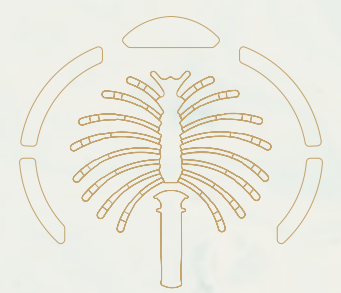


LIVE IN A MASTERPIECE

OWN A PIECE OF

HISTORY

2



Eight Unique Beach Villas

The Beach Collection	—	p.28
Villa Blue Horizon	—	p.34

THE BEACH COLLECTION

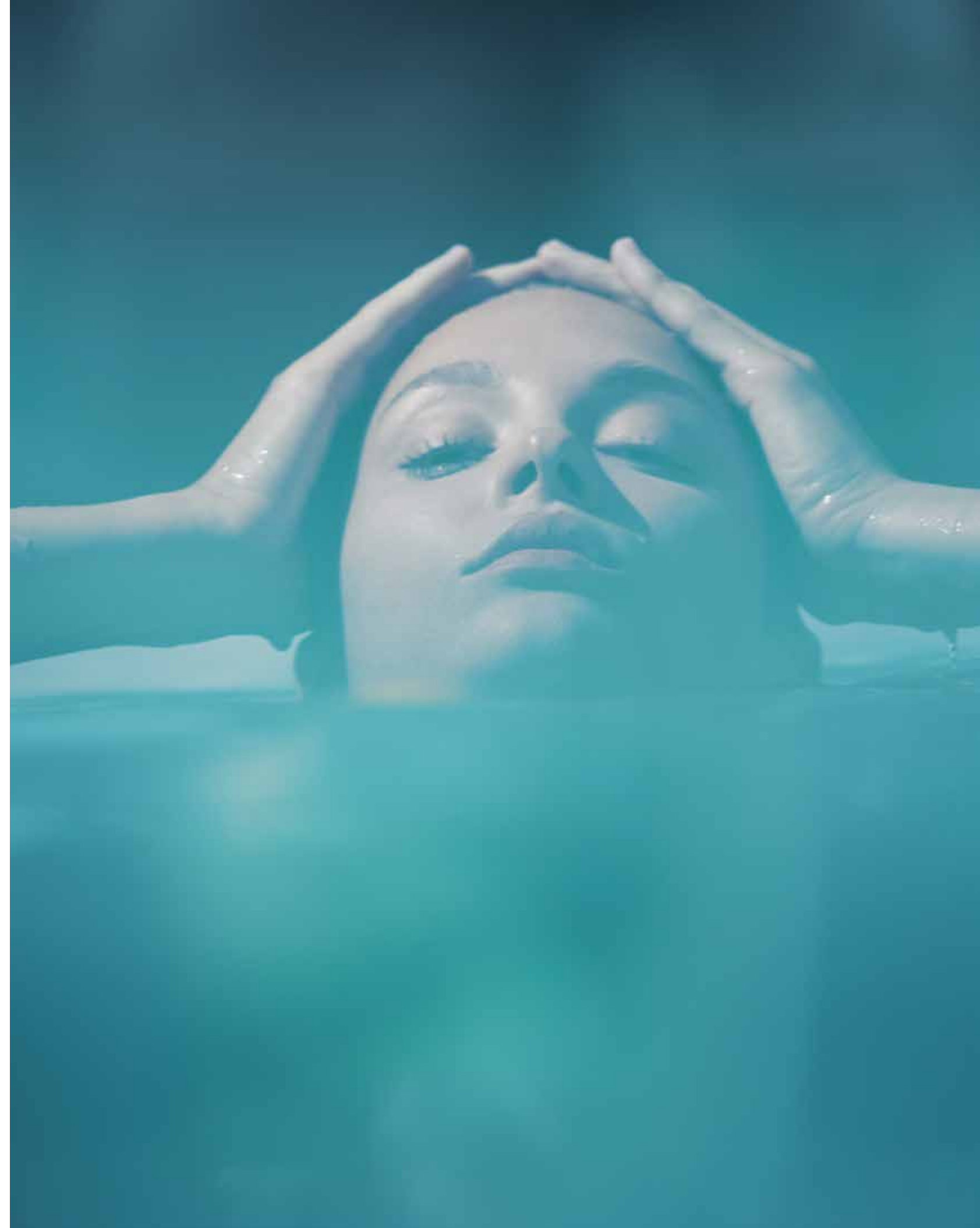
WELCOMING WATERFRONT RESIDENCES

THE CONTEMPORARY COMPOSITION OF EACH STATEMENT VILLA HAS BEEN METICULOUSLY DESIGNED.

Imagine living an exclusive waterfront experience. Every day, every morning and every evening, watching and listening to the sea with its waves, its sinuous movements, its sparkling surface: the perfect blend, creating a harmonious landscape.

A gorgeous living space, up to six generous bedrooms with private ensuite bathrooms, lush greenery and colourful plants, the careful design of every detail, and – overall – the feeling of a continuous and open relationship between the indoors and outdoors.

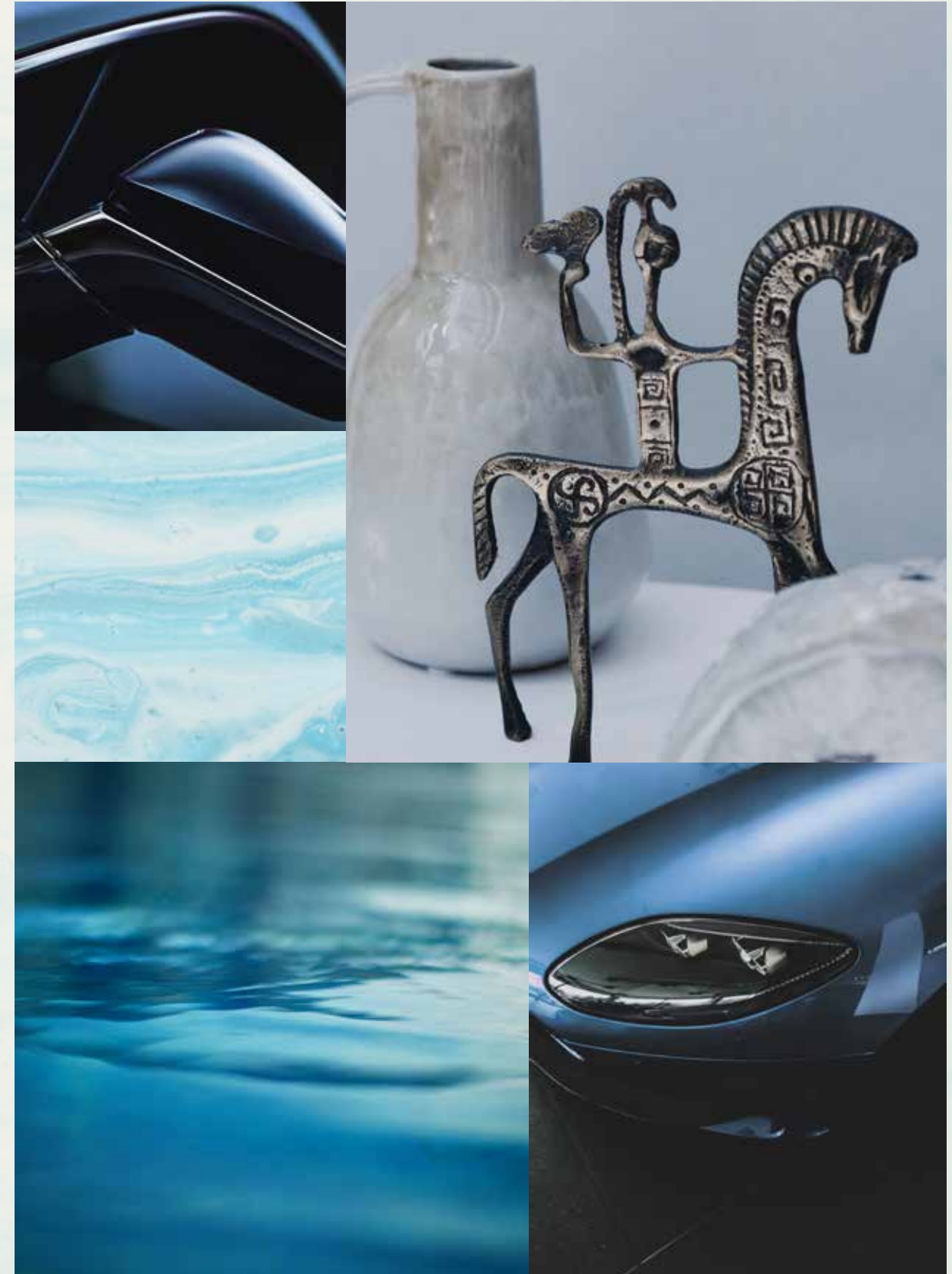
In the Beach Villas, everyday life is a natural expression of harmony and perfection.



Located on the exclusive fronds, each residence enjoys **direct beach connectivity** in this serene, private neighbourhood.

TRUE LUXURY LIVING REFLECTS
YOUR OWN DESIRES.

Choose an elegant home of the highest quality and enjoy an unrivalled lifestyle. Each villa will be unique and bespoke to realise individual needs and personal balance. We build happiness and prosperity for all our residents.





BEACH CONNECTIVITY / SERENE / PRIVATE

VILLA
BLUE
HORIZON

Six-Bedroom Property

“You would be greeted by the beach every morning, and that by itself is a great motivation to start your day.”

NAGA - ARCHITECT

VILLA BLUE HORIZON

A BRIGHT
BEACHFRONT HAVEN

A CALMING HOME BY THE WATER,
EMBELLISHED WITH STATEMENT DETAILS.

A unique layout that includes a dramatic feature staircase.

Staring at a blue horizon every day means embracing a calm and sensory way of life. Looking through the floor-to-ceiling windows, you can experience the elements around you coming together in perfect harmony. Looking out at the waterfront through special arabesque screens is enough to feel the blue embrace of the sky and the water. To be part of something infinite.



“The architecture had to be designed in a way to both provide a sense of luxury and create a comfortable, relaxing lifestyle”.

NAGA – ARCHITECT





THE DESIGN INCORPORATES MORE TRADITIONAL ELEMENTS, SUCH AS MASHRABIYA-INSPIRED, ARABESQUE SCREENS PAIRED WITH EXTENSIVE FLOOR-TO-CEILING GLAZING.

The distinct material difference between the ground and upper floors results in a truly striking façade.

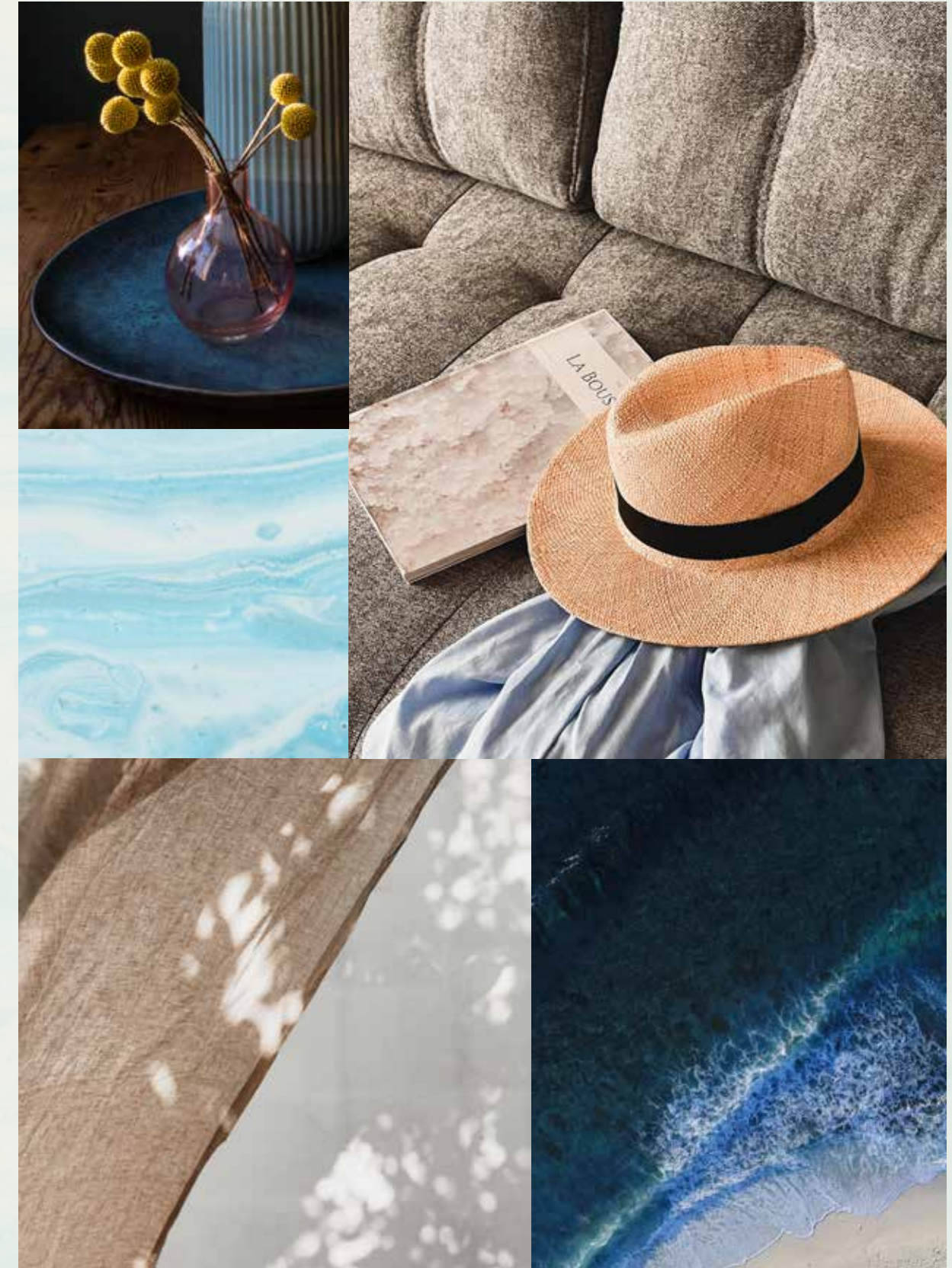
A versatile garage area has been included at the front of the property for enhanced flexibility and comfort.



In this bright, blissful home, a variety of luxurious textures and finishes come together.

A CONTEMPORARY BEACHSIDE ATMOSPHERE.

This property seamlessly blends comfort and luxury. With stunning, open-plan living, a dining room framed by floor-to-ceiling windows, a private family lounge on the first floor, and a flexible rooftop terrace, this home offers an abundance of comfortable lounge spaces that are complemented by statement design details, sea views and an abundance of outdoor spaces.



Gaze out at glittering blue water and white sands as you relax in the peace and tranquillity of home.





FROM THE FLOATING FEATURE STAIRCASE OVERLOOKING THE PRIVATE SIDE COURTYARD, YOU WILL BE ABLE TO OBSERVE THE SEA AS IF FROM THE DECK OF YOUR SHIP.

The opulent living and dining room is the perfect location to embrace the infinite blue of the horizon with family and friends.



A multipurpose rooftop lounge, which leads to a breathtaking terrace, crowns this beautiful villa.





Each space has been designed to enhance your daily life. Delicate details and fine finishes complete this magnificent home.

A HARMONIOUS ENVIRONMENT.

As you enter this spectacular home, enjoy a framed view of the seafront beyond. This home makes the most of its spectacular setting, creating an inviting and uplifting atmosphere with natural influences throughout.

Every morning starts with your wellbeing rituals right here in this nature-inspired sanctuary, where natural materials are harnessed to be in perfect harmony with the environment outside.

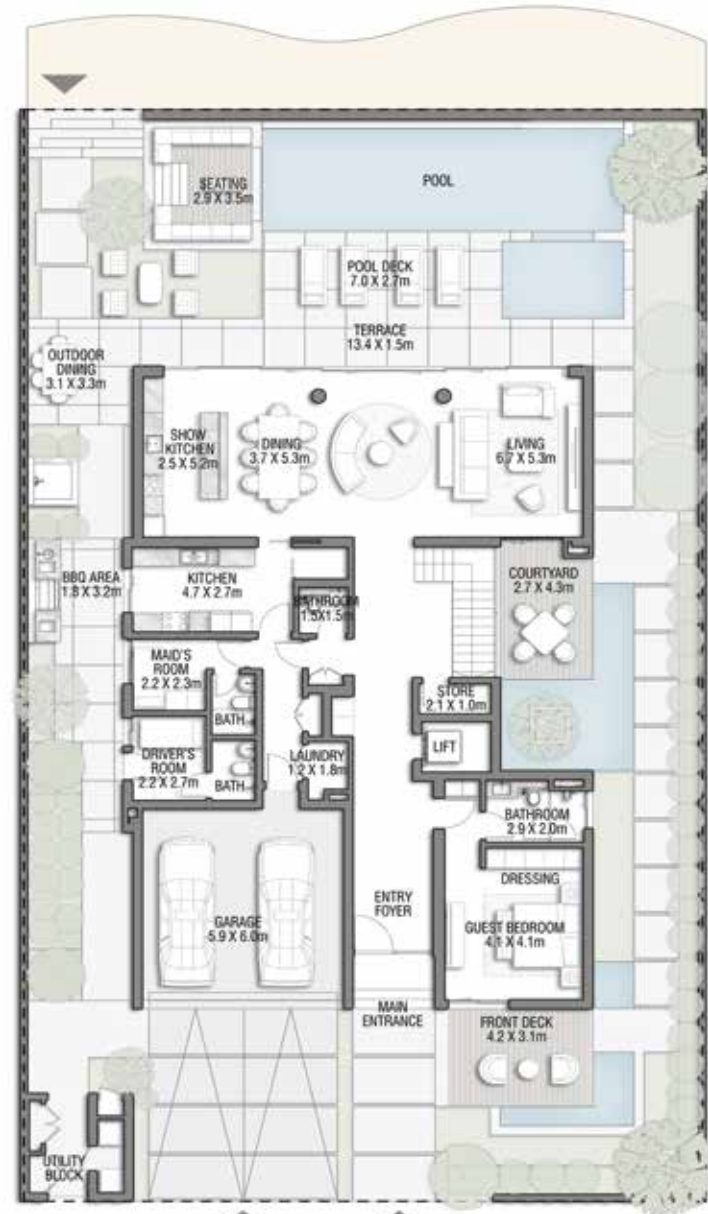


BLUE HORIZON

Beach Villas Collection

G + 2

6 BEDROOMS + FAMILY ROOM
+ ROOF LOUNGE AND TERRACE



GROUND FLOOR



SECOND FLOOR



FIRST FLOOR

FLOOR TYPE	SQ. M.	SQ. FT.
Ground Floor	206.74	2,225.33
Balcony / Terrace / Porch - GF	4.08	43.92
First Floor Area	244.64	2,633.28
Balcony / Terrace - First Floor	17.67	190.20
Second Floor Area	116.18	1,250.55
Balcony / Terrace - Second Floor	50.08	539.06
Garage - Covered	40.29	433.68
TOTAL BUILT-UP AREA	679.68	7,316.01
Garage with Pergola	0.0	0.0
TOTAL AREA	679.68	7,316.01



Numbers, square footage and floor plans are approximate. Final dimensions, square footage and floor plans may vary and are subject to change without notice. The developer reserves the right to make revisions. Built-Up Area is measured in accordance with Dubai Land Department standards. Plans, artistic renderings, landscaping and images are for illustrative purposes only and are subject to change without notice. Landscape shown is indicative and not provided by the developer. Pool layout and configuration shown on floor plans are for general illustrative purposes only and are not provided by the developer. The Bespoke Edition Option offered to the buyer at additional price will include a standard pool offering.

INFO@NAKHEEL.COM
800 NAKHEEL

THE BEACH COLLECTION

**PALM
JEBEL ALI
NAKHEEL**

The publication is for illustrative purposes only. Some of the images shown in the document were developed with computer graphics technology (photorealistic rendering) with reference to details for the façade and elevations, common areas, private areas and interiors of the villa, for the sole purpose of presenting a plan for future realization and/or the various, potential solutions following user customization. All furniture, decorative lighting and art are represented for marketing and rendering purposes only. For this reason, all information, descriptions, and images are purely indicative and subject to change. This document has no contractual value and is not binding on the investment company that owns the rights and information reported. The reproduction and the partial use of texts and images is forbidden without prior authorization.

