

**PALM
JEBEL ALI**

VILLA

P R O V E N C E

THE BEACH COLLECTION

NAKHEEL

Index

1. A CURATED COLLECTION

THE
BEACH VILLAS

Serenity By The Sea

In a beach villa, a happy tomorrow arrives every day, every single dawn.

Beachfront living at its finest	—	P. 6
An iconic neighbourhood	—	P. 15
Introducing the Beach Collection	—	P. 20

2. LIVE IN THE MASTERPIECE

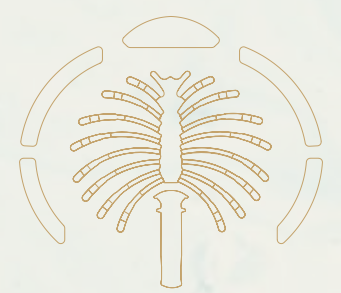
OWN A PIECE
OF HISTORY

The Beach Collection	—	P. 28
Villa Provence	—	P. 34

A CURATED COLLECTION

THE
BEACH
VILLAS

1



Serenity By The Sea

Beachfront living at its finest
An iconic neighbourhood
Introducing the Beach Collection

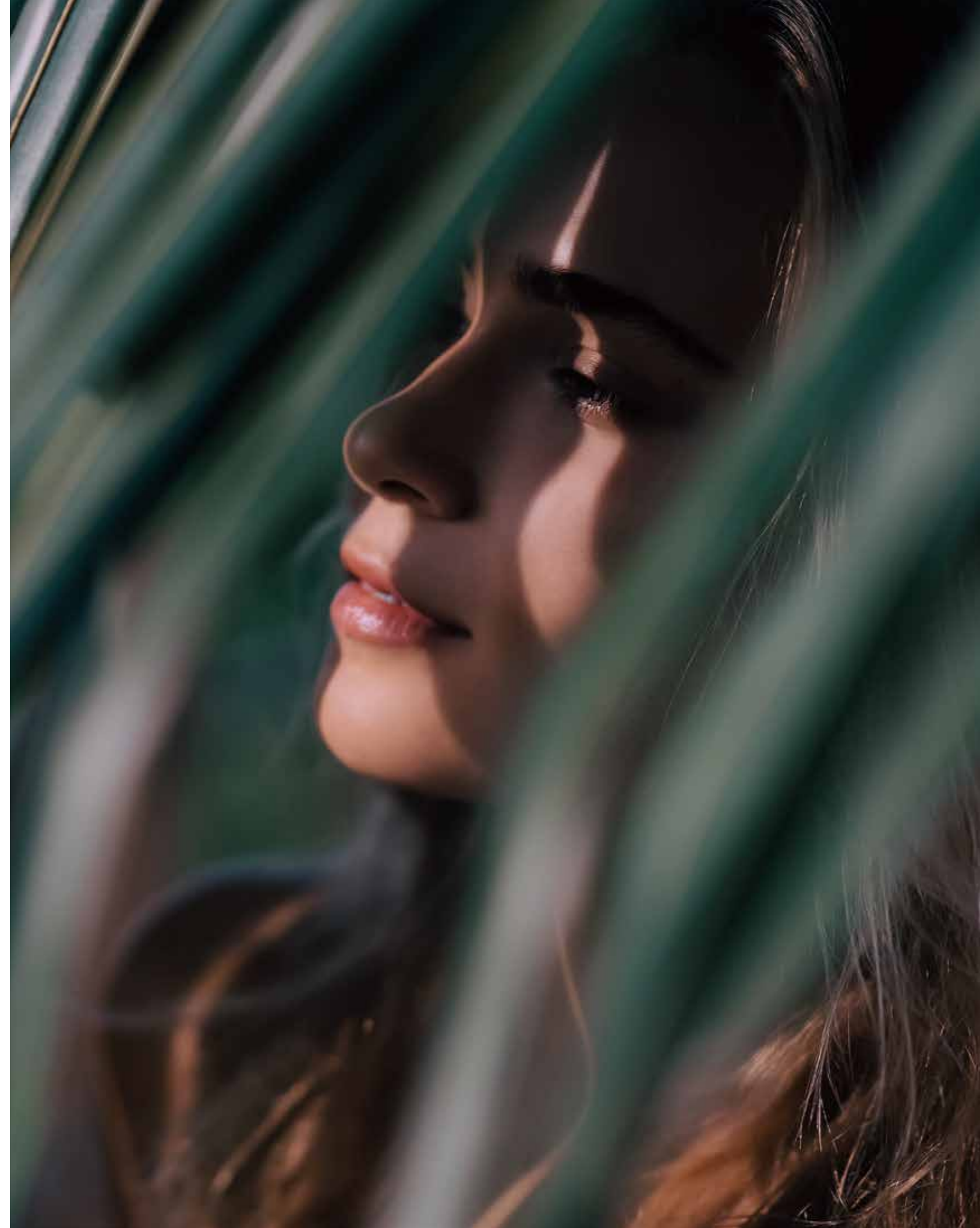
— P.6
— P.15
— P.20

— BEACHFRONT LIVING AT ITS FINEST

SUN, SEA, SAND, & SOPHISTICATION

EDEN HAS A NEW ADDRESS.

Welcome to Palm Jebel Ali, a world-class lifestyle destination meticulously designed and impeccably curated, providing unrivalled luxury living to its residents.

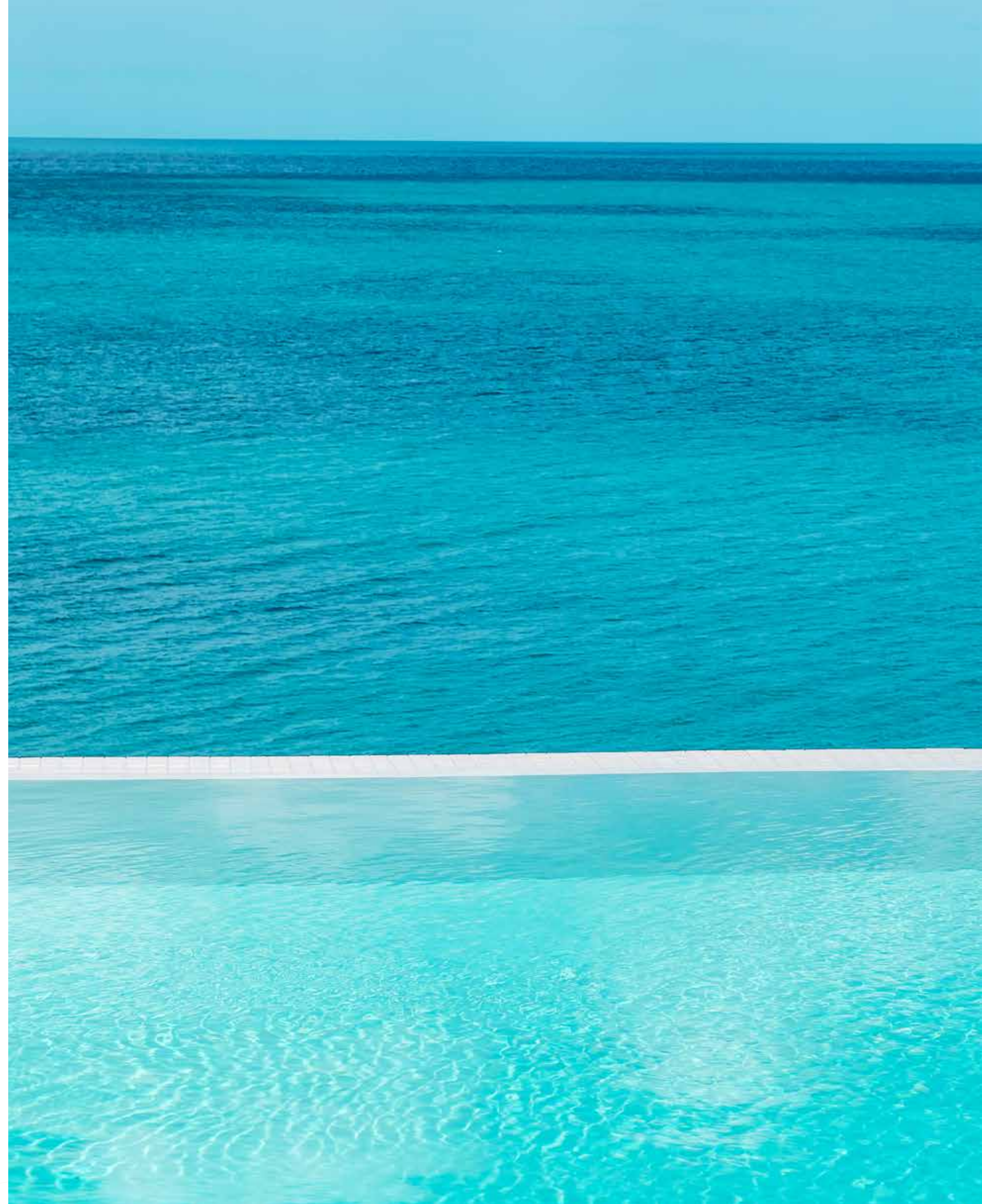


Live a life of **serenity and comfort** in Dubai's most coveted district, a true kaleidoscope born out of colourful greenery, azure waters, and pristine white sands.

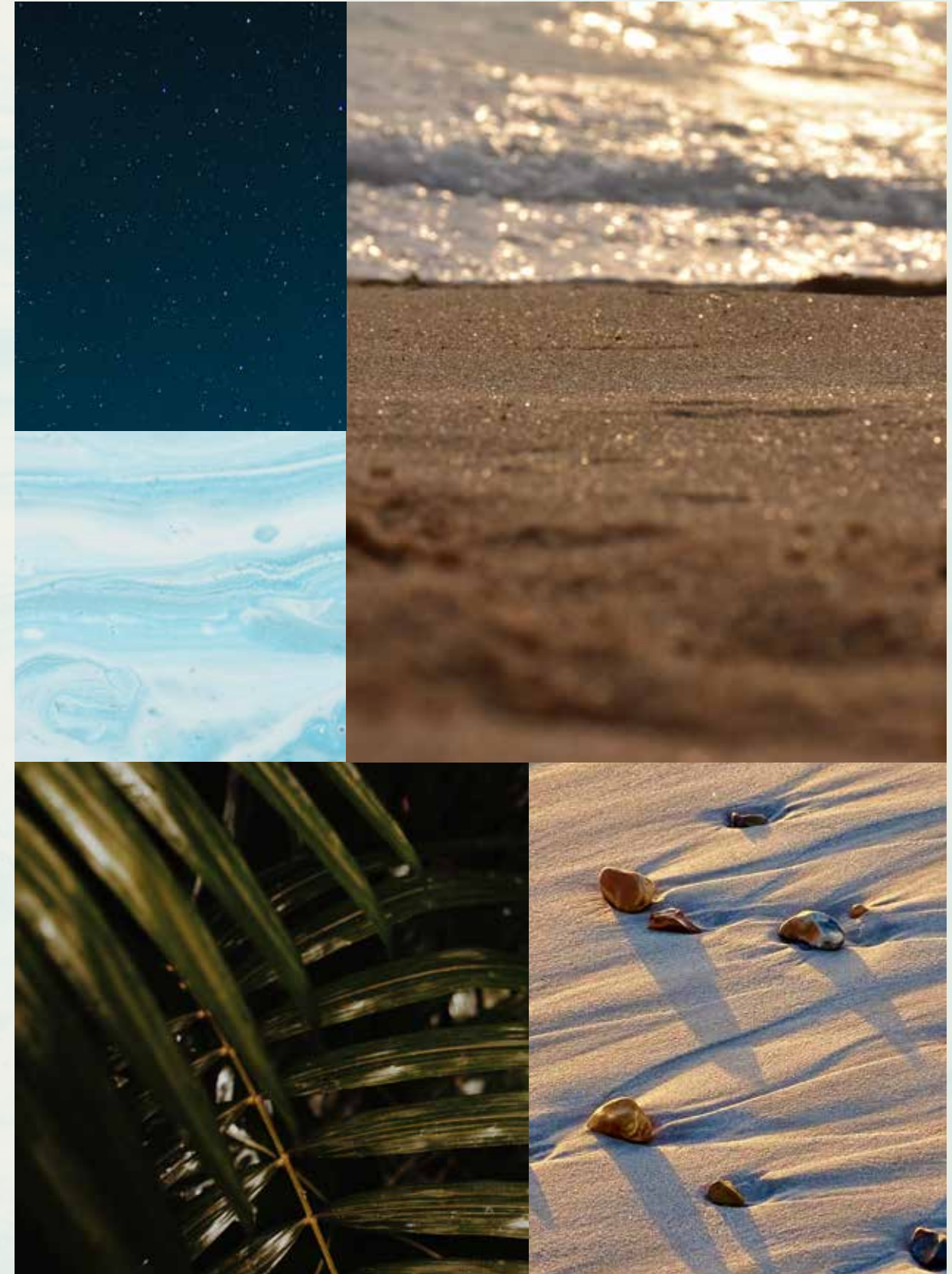
LIVE IN HARMONY WITH NATURE, BETWEEN THE CITY AND THE SKY.

Palm Jebel Ali rises from the sea to form a perfect paradisiacal archipelago. This masterpiece of luxury living offers a unique perspective on Dubai's skyline from a haven of tranquillity to boasting the longest coastline of any destination in Dubai. Palm Jebel Ali is located minutes away from the energy of the city, with excellent connectivity via Sheikh Zayed Road (E11) to other Dubai destinations or to Abu Dhabi. Palm Jebel Ali will be the feature destination of Dubai's rapidly developing southern urban centre. Spectacular properties and five-star amenities are skilfully woven together to create a highly desirable residential destination.





THE
FRONDS
BEACH COLLECTION





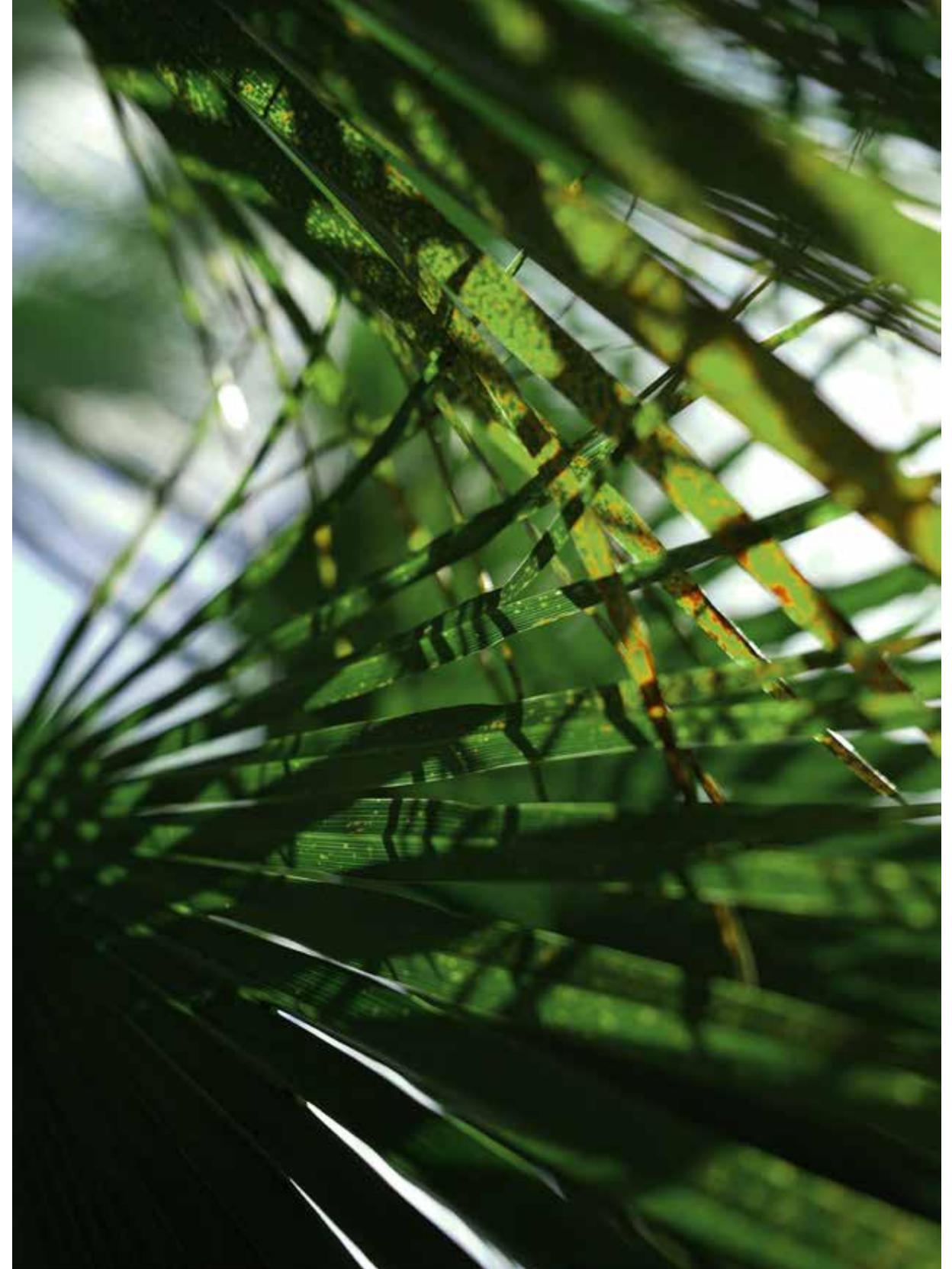
— FLOURISHING GREEN FRONDS

AN ICONIC NEIGHBOURHOOD

ARTFULLY DESIGNED, PRIVATE
NEIGHBOURHOODS FOR SOPHISTICATED
CITY LIVING.

Each exclusive frond forms its own thoughtfully planned private neighbourhood. Discover elegant streets painted in varying shades of green. Lush, layered flora merges with carefully curated foliage to create a perfectly harmonious residential landscape directly on the beachfront.

The frond community focuses on offering an active lifestyle, with wide walkable streets allowing pedestrians and bikers to access the beach through pocketed parks. The frond streetscape offers an intensely lush and fragrant landscape providing adequate shade coverage, with designated tree corridors alternating with street lighting and an additional layer of planting buffer to complete this idyllic verdant oasis.



Savour the refined, tropical atmosphere that surrounds you as you step out from your serene garden onto the sandy beach that lies at your doorstep. Enjoy the calming sounds of the waves and the openness of the sea for moments of pure relaxation.

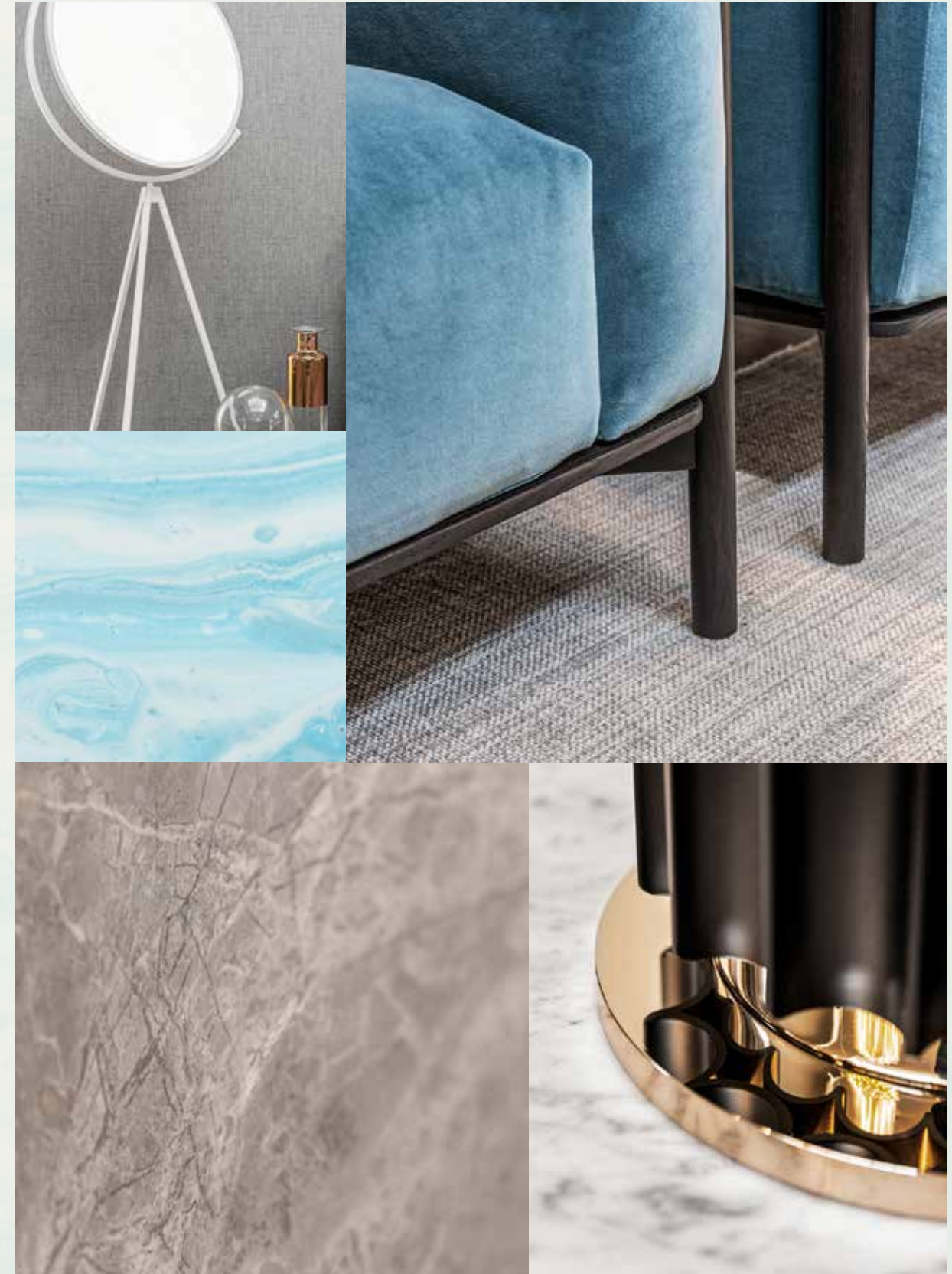


INTRODUCING THE BEACH COLLECTION

CRAFTED WITH CARE

SOPHISTICATED STYLE AND PERFECT POISE.
DISCOVER THE BLISSFUL [BEACH COLLECTION](#).

An inspired collection nestled in an idyllic setting.
Relax as you listen to the sounds of calming water
from the comfort of your enchanting beachfront
terrace.



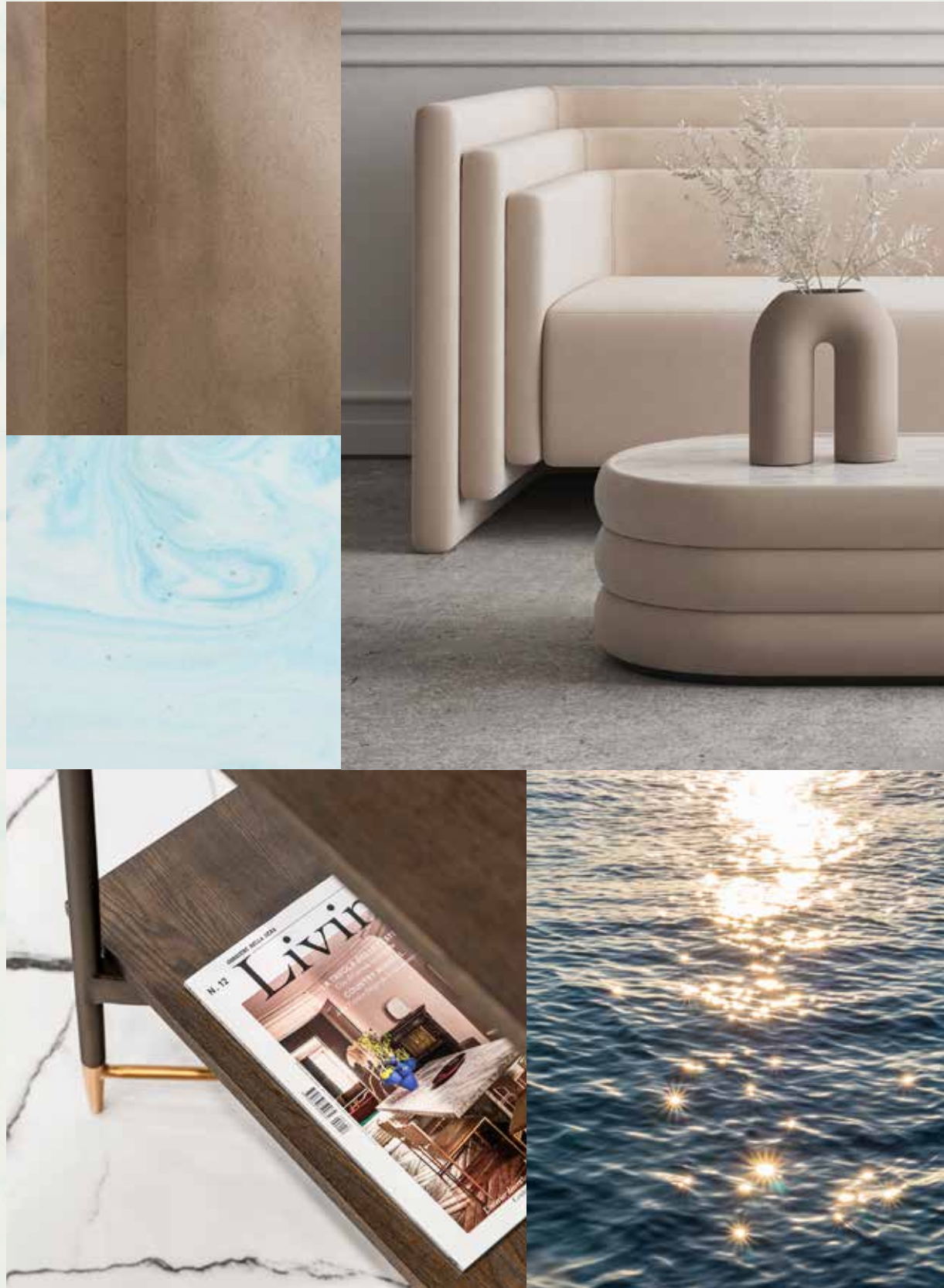
Exceptional design, a breathtaking beachfront location, and the tranquillity of an exclusive, private neighbourhood.

HOMES DESIGNED WITH **STYLISH FLAIR.**

The Beach Collection is for those who seek a home with a distinctly creative, contemporary design. Discover the wide range of unique architectural designs developed to accommodate a variety of lifestyles with thoughtful spacious layouts that ensure seamless indoor-outdoor living, designed to maximise views of the sea and integrate a feeling of outdoor and indoor harmony. Contemporary architecture achieves a timeless appeal. Villa finishes are unique to each villa, complementing its design and enhancing its key features.



EXCEPTIONAL DESIGN / LUXURIOUS BEACHSIDE ENVIRONMENT / BEACHFRONT LOCATION

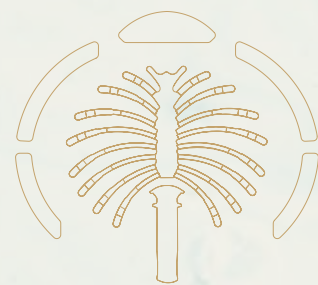


LIVE IN A MASTERPIECE

OWN A PIECE OF

HISTORY

2



Eight Unique Beach Villas

The Beach Collection
Villa Provence

— P.28
— P.34

THE BEACH COLLECTION

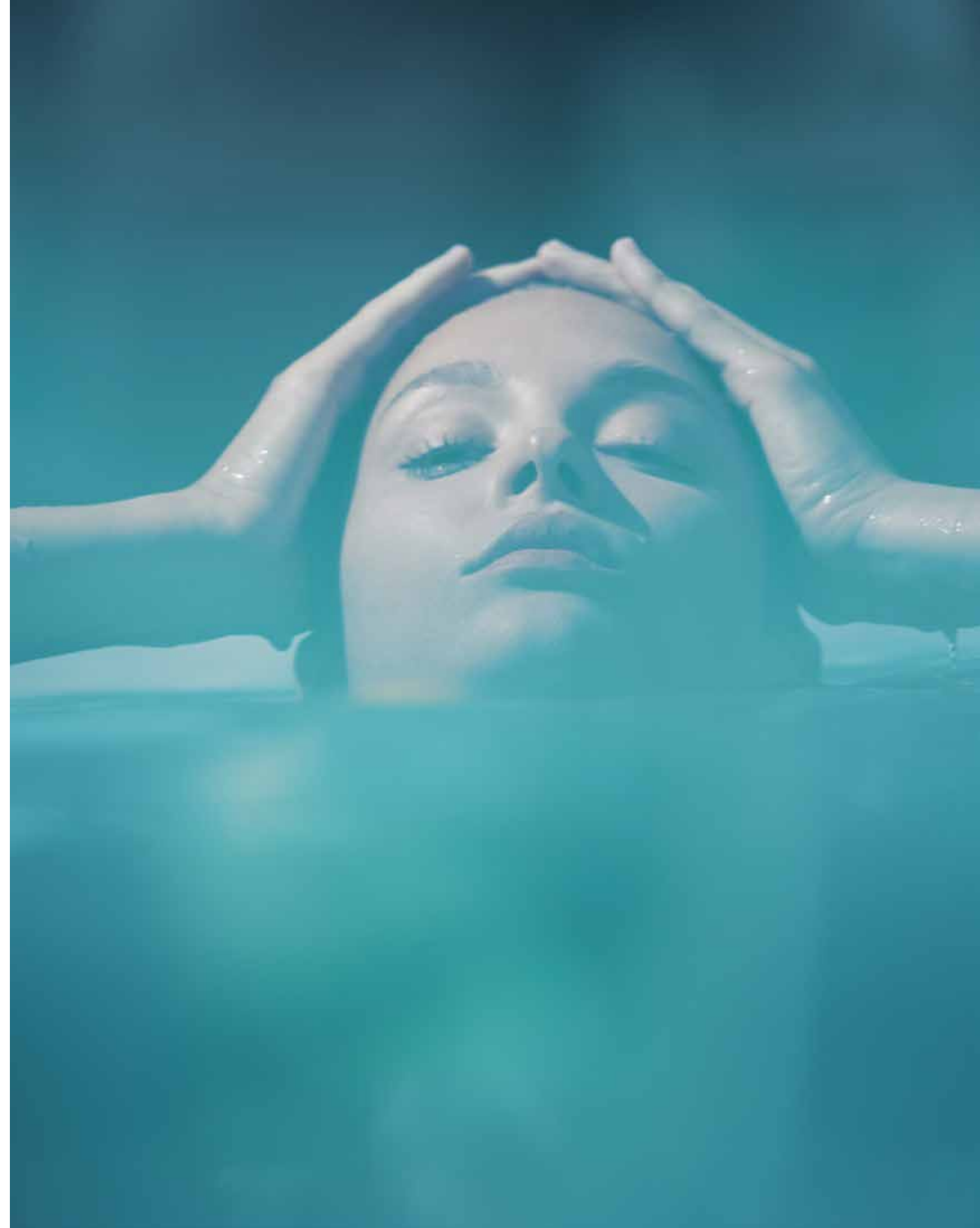
W E L C O M I N G W A T E R F R O N T R E S I D E N C E S

THE CONTEMPORARY **COMPOSITION** OF EACH STATEMENT VILLA HAS BEEN METICULOUSLY DESIGNED.

Imagine living an exclusive waterfront experience. Every day, every morning and every evening, watching and listening to the sea with its waves, its sinuous movements, its sparkling surface: the perfect blend, creating a harmonious landscape.

A gorgeous living space, up to six generous bedrooms with private ensuite bathrooms, lush greenery and colourful plants, the careful design of every detail, and – overall – the feeling of a continuous and open relationship between the indoors and outdoors.

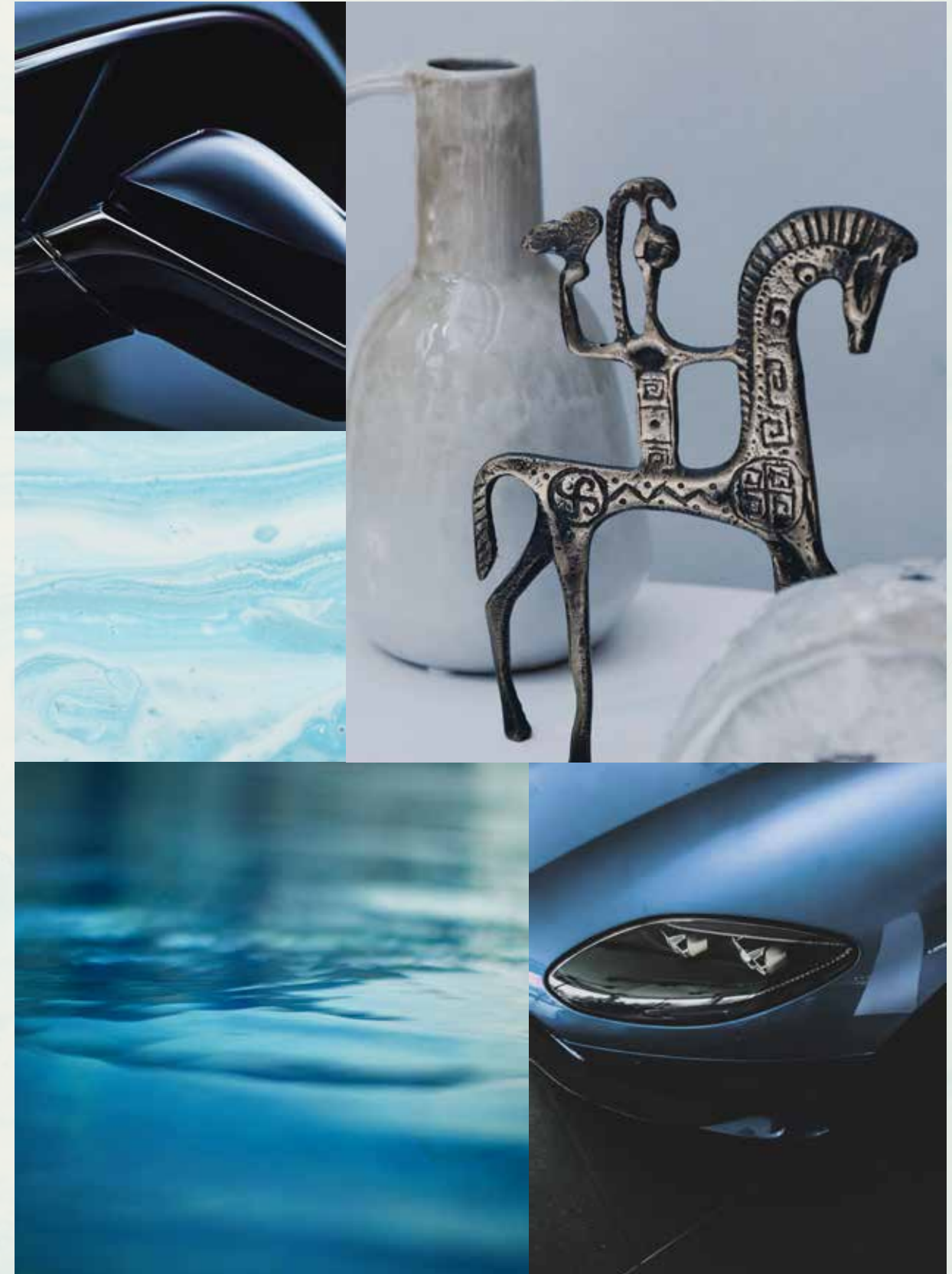
In the Beach Villas, everyday life is a natural expression of harmony and perfection.

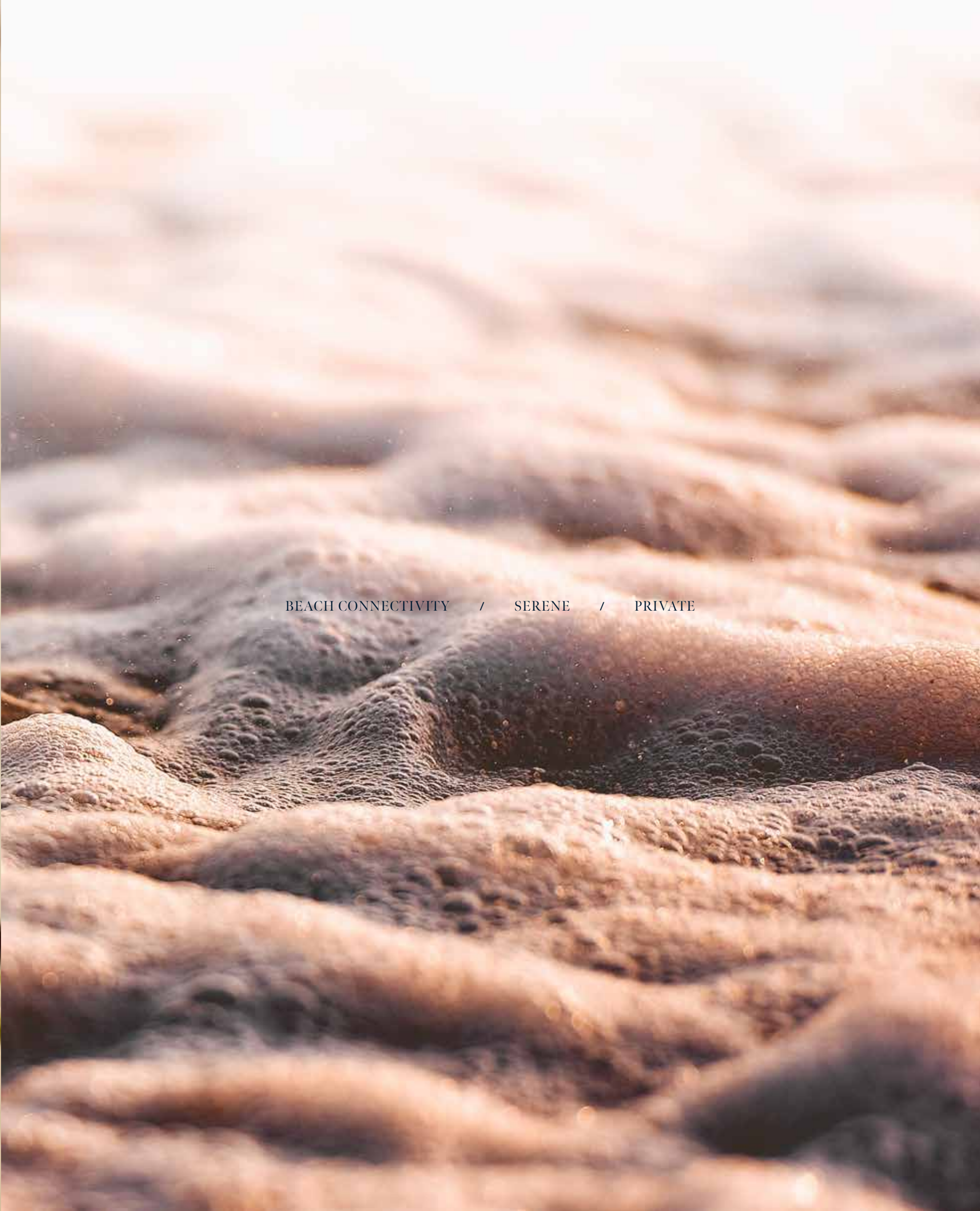


Located on the exclusive fronds, each residence enjoys **direct beach connectivity** in this serene, private neighbourhood.

TRUE LUXURY LIVING REFLECTS
YOUR OWN DESIRES.

Choose an elegant home of the highest quality and enjoy an unrivalled lifestyle. Each villa will be unique and bespoke to realise individual needs and personal balance. We build happiness and prosperity for all our residents.





BEACH CONNECTIVITY / SERENE / PRIVATE

VILLA
P R O V E N C E

Five-Bedroom Property

“The layout of the space is designed to give the residents a chance to see the outstanding views at every opportunity possible.”

LW DESIGN - ARCHITECT

VILLA PROVENCE

A STRIKING
C O N T R A S T

THIS OPULENT SEAFRONT VILLA IS
COMPOSED OF DARK AND LIGHT
CONTRASTING SHADES.

The result is a truly spectacular and unique villa with true indoor-outdoor connectivity. The contrasting colour palette continues from the external façade into the interiors.

Every emotion in Provence comes from a contrast of shades. In this villa, the balance of design is achieved through the contrast of dark and light. Here, not just every detail but every movement, step and thought flow together as though part of a harmonious melody.





The entry space harmonises with double volume; the impression is of entering a temple. A temple of balance.

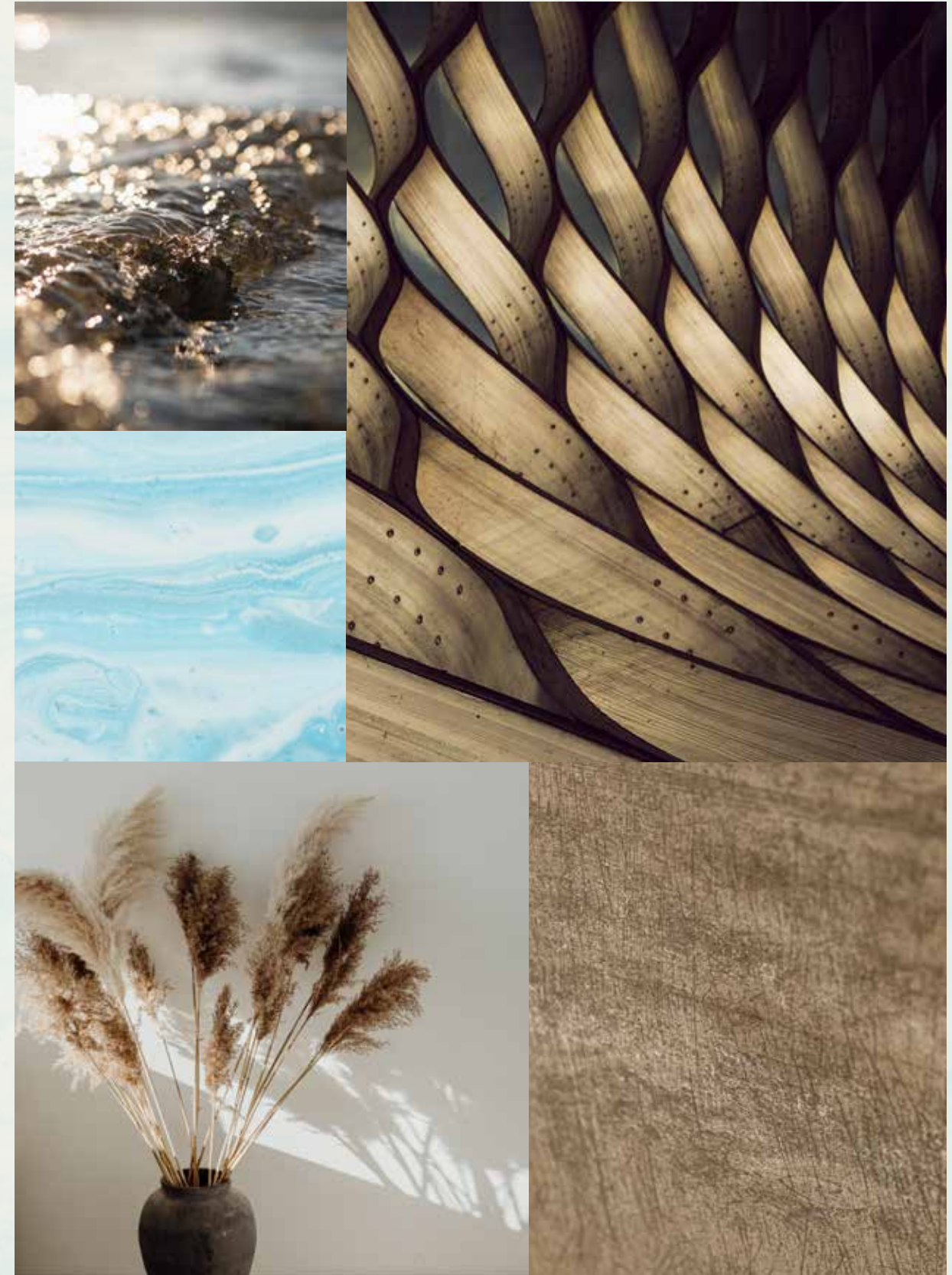
The restrained façade of this striking villa features a strong contrast between its dark wall panels and the white horizontal bands that separate each floor. The villa is characterised by the extended roof canopy that adds an element of drama to the entrance.



This **luxury** beachfront villa is ideal for an indoor-outdoor lifestyle.

BOLD DETAILS.

In this spectacular home, the waterfront setting is embraced. Light, air and a salty-sweet sea breeze are invited into the home with spaces that effortlessly flow from the inside to the outside. Luxurious natural materials complete the scene. The flow, the harmony, the choreography of happiness.







THIS SOPHISTICATED OPEN-PLAN SPACE IS FILLED WITH NATURAL LIGHT FROM THE FLOOR-TO-CEILING GLASS, ENHANCING THE SPACE WITH UNLIMITED SEA VIEWS.

On the second floor, a private roof lounge allows immediate access to the stunning roof terrace, displaying sweeping views of the dazzling seafront below.



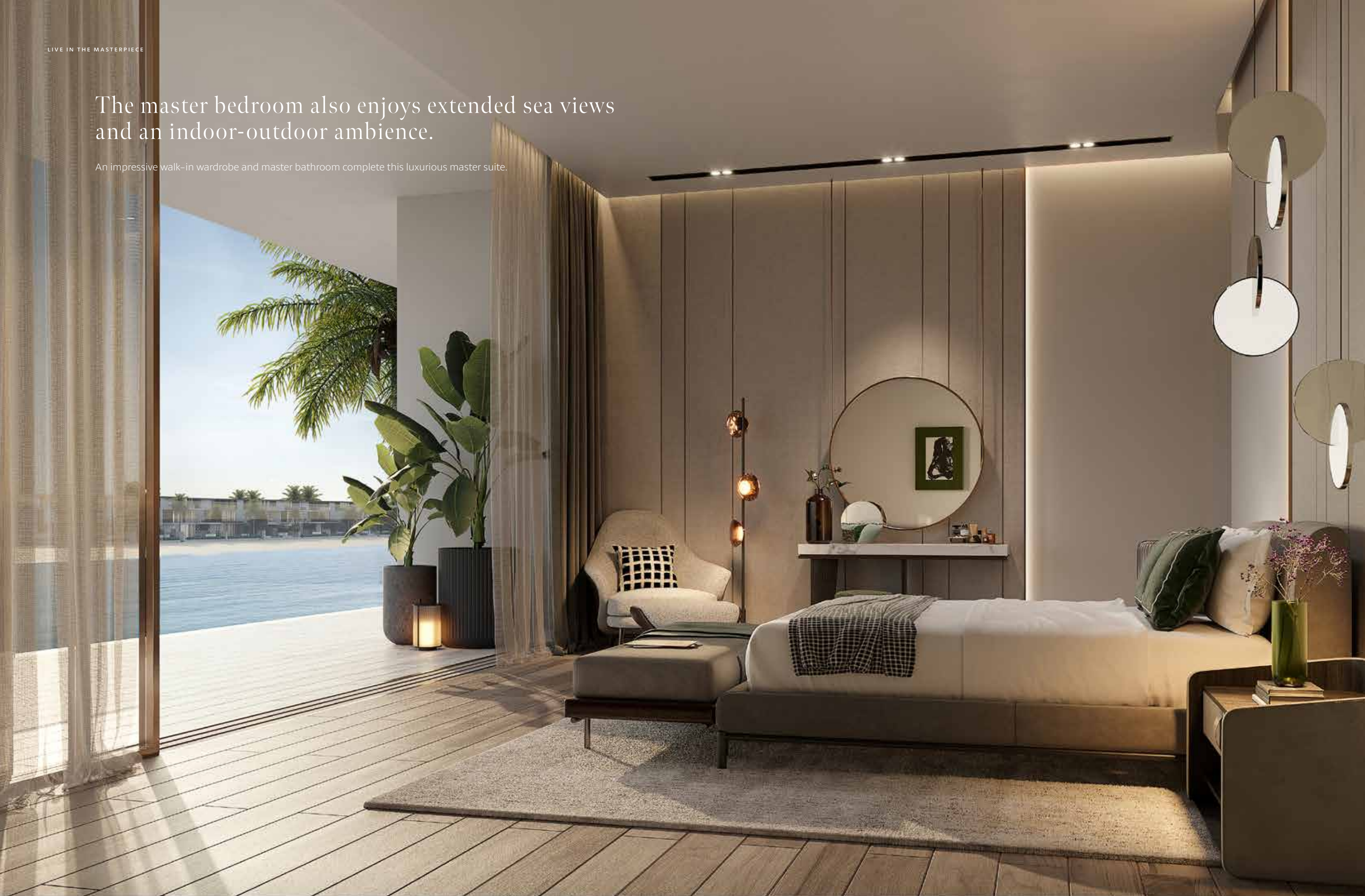


THE MAJESTIC DOUBLE-VOLUME ENTRY SPACE DEFINES THE GRANDEUR OF THE VILLA LEADING TO THE FEATURE STATEMENT STAIRCASE LOCATED IN THE MAIN FOYER.

THE PRIVATE GUEST SUITE, POSITIONED AT THE FRONT OF THE PROPERTY, OPENING DIRECTLY TO THE FRONT GARDEN, ALLOWS IT TO SERVE AS A QUIET HOME OFFICE FOR ENHANCED PRIVACY.

The master bedroom also enjoys extended sea views and an indoor-outdoor ambience.

An impressive walk-in wardrobe and master bathroom complete this luxurious master suite.





From sunrise to sunset, this distinguished property will shine at any time of day.

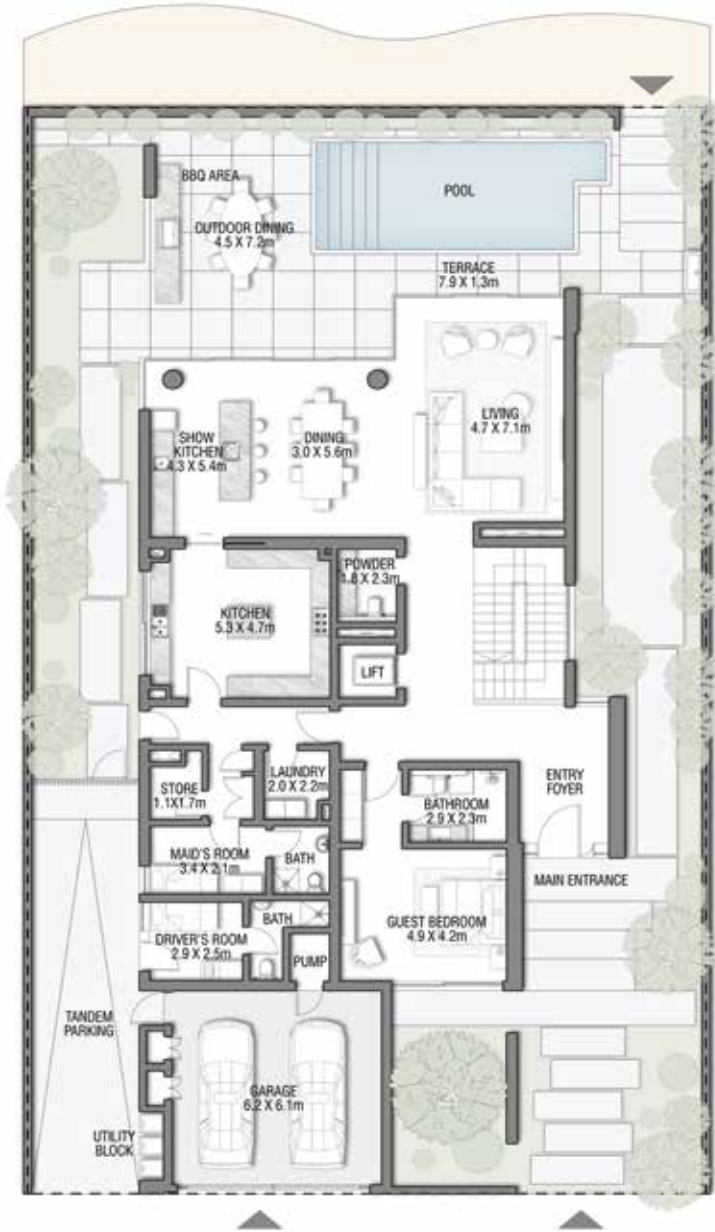
A TRUE STATEMENT PROPERTY WITH FINE
DETAILING THROUGHOUT.

Exquisite natural materials blend with rich textures
to create warm and inviting spaces throughout this
beachfront home.

The spacious master bathroom is the height of luxury, complete with a dual basin design.

Just like the stars, the moon and the sun - this villa shines.





GROUND FLOOR

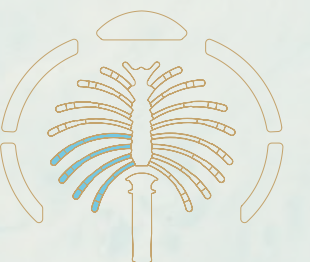
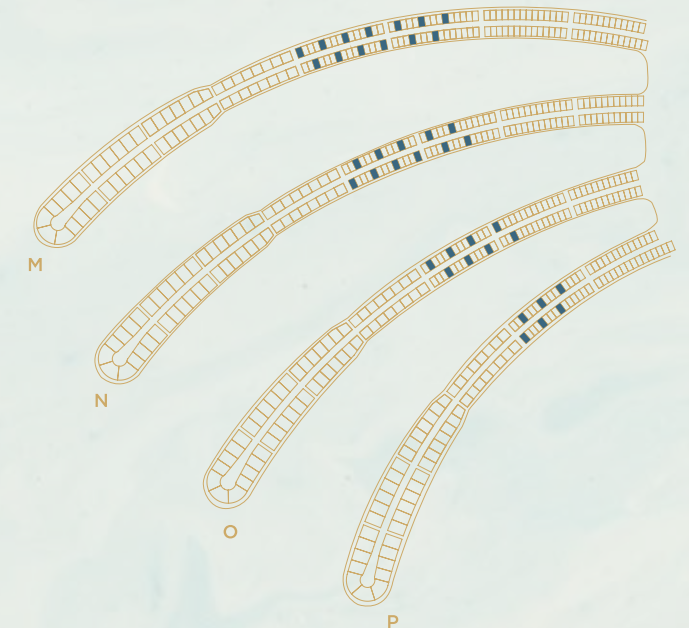


SECOND FLOOR



FIRST FLOOR

FLOOR TYPE	SQ. M.	SQ. FT.
Ground Floor	260.96	2,808.95
Balcony / Terrace / Porch-GF	0.0	0.0
First Floor Area	236.54	2,546.10
Balcony / Terrace - First Floor	44.72	481.36
Second Floor Area	133.16	1,433.32
Balcony / Terrace - Second Floor	49.58	533.67
Garage - Covered	48.17	518.50
TOTAL BUILT-UP AREA	773.13	8,321.90
Garage with Pergola	0.0	0.0
TOTAL AREA	773.13	8,321.90



Numbers, square footage and floor plans are approximate. Final dimensions, square footage and floor plans may vary and are subject to change without notice. The developer reserves the right to make revisions. Built-Up Area is measured in accordance with Dubai Land Department standards. Plans, artistic renderings, landscaping and images are for illustrative purposes only and are subject to change without notice. Landscape shown is indicative and not provided by the developer. Pool layout and configuration shown on floor plans are for general illustrative purposes only and are not provided by the developer. The Bespoke Edition Option offered to the buyer at additional price will include a standard pool offering.

INFO@NAKHEEL.COM
800 NAKHEEL

THE BEACH COLLECTION

**PALM
JEBEL ALI
NAKHEEL**

